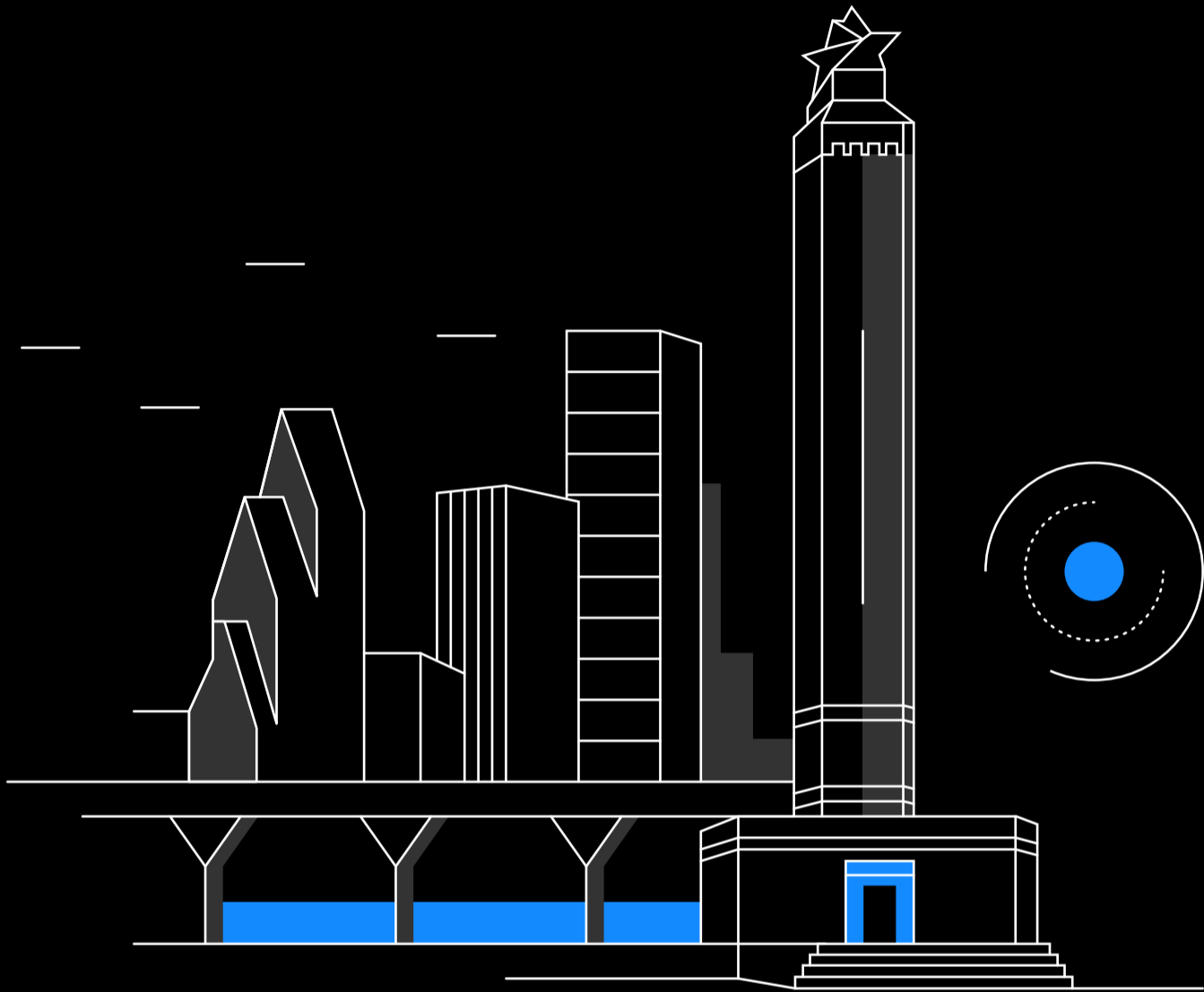


iLamp



# Sublicense Report for **Houston**

This document covers information required to build a road map to commercial viability for the iLamp sublicense in Houston, Texas.



Houston Population

**2.303 Million**

GDP

**513.28 Billion**

Estimated Streetlights

**200,361**

Street lighting is the largest single source of carbon emissions from local governments, typically 30-60% of their total emissions.

Enhanced lighting leads to significant and sustained reductions in both night and daytime outdoor crimes with a benefit cost ratio of 5.1-10.8.

On residential roads 3.1% of accidents are fatal in lit conditions, rising to 4.9% in areas without street lights.

[iLamp.com](http://iLamp.com)  
[ILOCX.com/iLamp](http://ILOCX.com/iLamp)



Follow us  
[@officialilamp](https://www.instagram.com/officialilamp)

[iLampTexas.com](http://iLampTexas.com)  
[ConflowPower.com](http://ConflowPower.com)  
[Batteryware.com](http://Batteryware.com)  
[PowerasaService.com](http://PowerasaService.com)  
[DroneReady.com](http://DroneReady.com)

Houston represents perhaps the biggest opportunity for iLamp not just in Texas but in the entire USA due to its unparalleled metrics of rapid housing and population growth combined with underlit streets and high outdoor index crime. Houston provides the perfect environment for iLamp to be integrated into new developments - the fastest growing in the country.

Houston's streets and neighborhoods are underlit and suffer from above average outdoor index crime, road fatalities and pedestrian fatalities, underscoring the need for iLamp's enhanced lighting and smart city solutions. By transforming neighborhood safety across its massive 599 square miles, iLamp can play a pivotal role in shaping Houston's urban landscape into a more secure, sustainable, and technologically advanced city.

An in depth deep dive into the demographics and statistics of each Houston neighborhood and ZIP code has revealed the extent of the opportunity for iLamp. This comprehensive analysis highlights specific areas where the implementation of iLamp's advanced streetlighting solutions can have the most significant impact. The detailed results of this study are available in this document and on [iLampTexas.com](http://iLampTexas.com), providing a clear roadmap and tools to enable iLamp's Houston transformation.

**Made in Texas:** iLamp's commitment to local rights drives job creation across various sectors, including production, installation, upgrades, add-ons and maintenance. By leveraging regional talent and materials, it fosters economic growth and supports regional prosperity, aligning with Houston's flourishing status as the top city for new home construction and real estate activity.

**Safer Neighborhoods:** iLamp's advanced street lighting solutions significantly enhance public safety by improving visibility and deterring crime. Studies have shown that enhanced street lighting leads to sustained reductions in crime rates of over 40%. In Houston, this could mean a substantial decrease in vehicle related crimes and other offenses, contributing to safer, more secure neighborhoods. iLamp's enhanced street lighting reduces crime producing an overall sense of community safety.



*Creativity is the power to correct the seemingly unconnected.*

- William Plomer

Houston Crime

**74% Above Avg.**

Avg. Houston House Price

**\$348,000**

Houston Area

**599 Sq Mi**

---

Enhanced lighting leads to significant and sustained reductions in both night and daytime outdoor crimes with a benefit cost ratio of 5.1–10.8.

Street lighting is the largest single source of carbon emissions from local governments, typically 30–60% of their total emissions.

On residential roads 3.1% of accidents are fatal in lit conditions, rising to 4.9% in areas without street lights.

**Increased House Prices:** Enhanced street lighting correlates with increased property values. A 1% reduction in crime can lead to an approximate 0.5% to 1% increase in property values. Given Houston's average home price of \$340k, improved street lighting in under lit areas could boost average property values by up to \$68k per house. This increase is driven by improved perceptions of safety, higher demand for housing in well-lit, secure neighborhoods, and overall economic stability.

**Improved Health:** iLamp's modular environmental sensors can monitor air quality and other environmental factors, providing real-time data that empower residents and policymakers to take proactive measures to reduce exposure to harmful substances, and warn allergy sufferers allowing them to take extra precautions. Better air monitoring directly contributes to reduced respiratory issues, reduction in symptoms of allergy sufferers, and other health benefits, fostering a healthier community.

**Hazard Warning:** iLamp sensors and communications enable early warnings, while enhanced lighting illuminates response areas, improving response times and resulting in better outcomes.

**Local Rights:** iLamp's focus on local manufacturing and the potential for sub-licensing rights ensures that the benefits of this innovative technology remain within the community. This approach not only creates jobs but also supports local businesses and economic initiatives. By prioritizing regional talent and resources, iLamp reinforces Houston's commitment to local growth and technological advancement.

**Perpetual Revenue:** Sublicensing rights, lamp sales, installation and maintenance, hardware modules, App Store and Power as a Service, offer the license holder varied sources of revenue and are all covered in depth in this document.

**Unlimited Growth:** Sublicensee's are part of the Conflow Power family and are preferential partners for all new product roll outs in their territory.

---

# The iLamp

## What is iLamp?

iLamp is a groundbreaking, self-powered, modular, and enhanced lighting solution designed to address multiple urban challenges. By integrating autonomous power generation capabilities, and monetizing them iLamp alleviates grid strain and contributes to energy sustainability while generating its own revenue. Its modular design supports a wide range of smart city applications, offering further monetization opportunities and revenue streams and making it a future-proof solution for urban infrastructure.

Equipped with low profile, cylindrical solar panels, iLamp harnesses renewable energy, storing it in batteries for efficient distribution. This setup powers street lighting and supports various smart sensors and modules, eliminating transmission costs and reducing emissions to near zero.

Each iLamp is customizable to meet the needs of different neighborhoods—supporting add-ons like 5G WiFi, traffic management, CCTV, environmental sensors and a plethora of other modules, sensors and software. This modularity ensures a quick, plug-and-play setup, making it adaptable and future-proof.

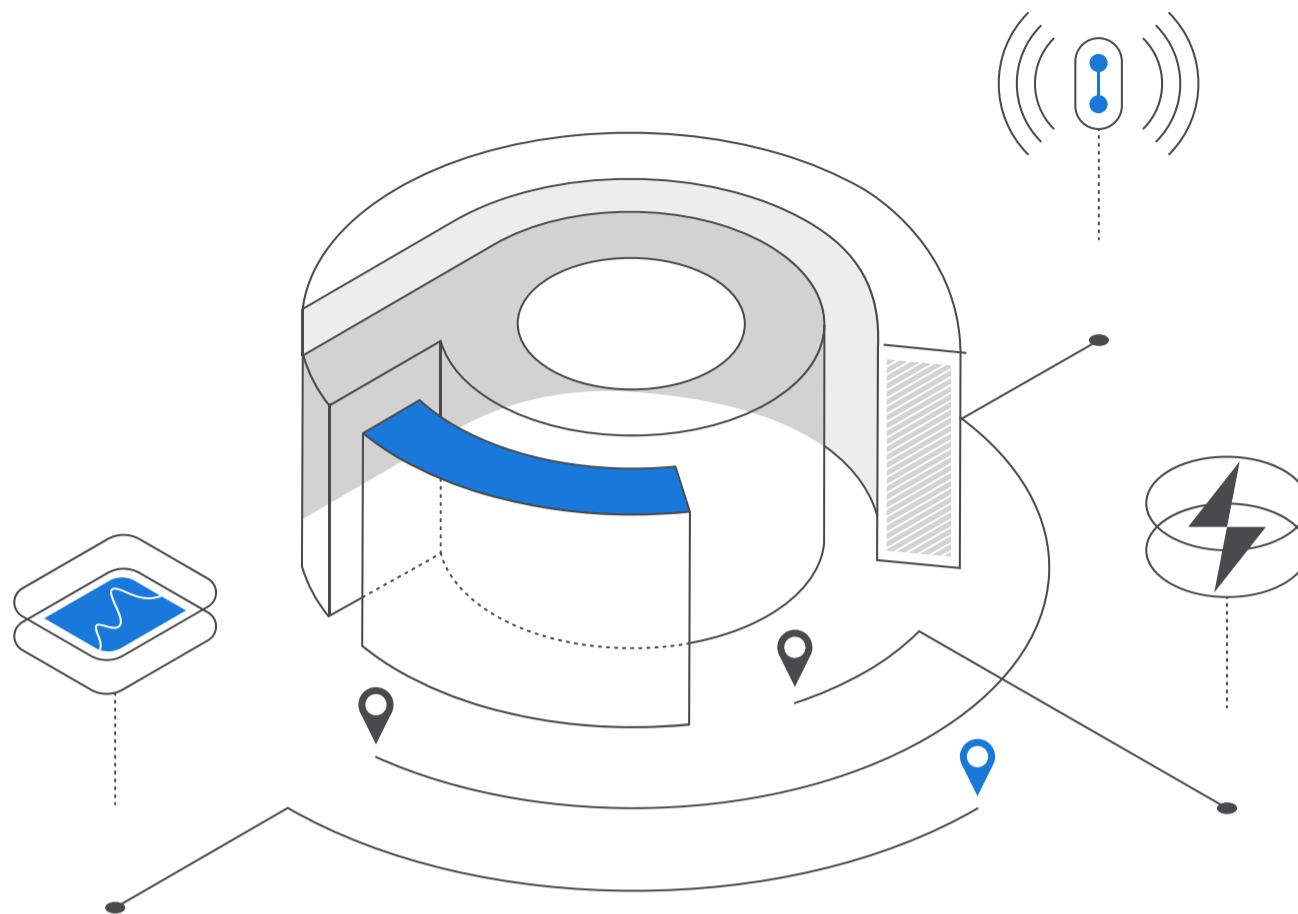
iLamp qualifies as enhanced street lighting, which has been shown to reduce crime by 20-40%. Implementing iLamp can therefore significantly reduce various crimes, improve public safety, improving quality of life and stimulating the local economy.

Through its App and Module Stores, iLamp is a dynamic framework for hardware and software ingenuity, similar to Google Play and Apple App Store. It transcends its primary function, offering a comprehensive urban solution.

iLamp is not just a streetlight; it is a comprehensive urban solution designed to enhance safety, sustainability, and economic growth. By leveraging advanced technology and modular design, iLamp offers neighborhoods across Houston a future proof infrastructure that adapts to evolving needs, making neighborhoods safer, more attractive, and better connected.

Whether through crime reduction, economic stimulation, or health and environment benefits, iLamp stands as a beacon of innovation in urban development, illuminating the future around it.





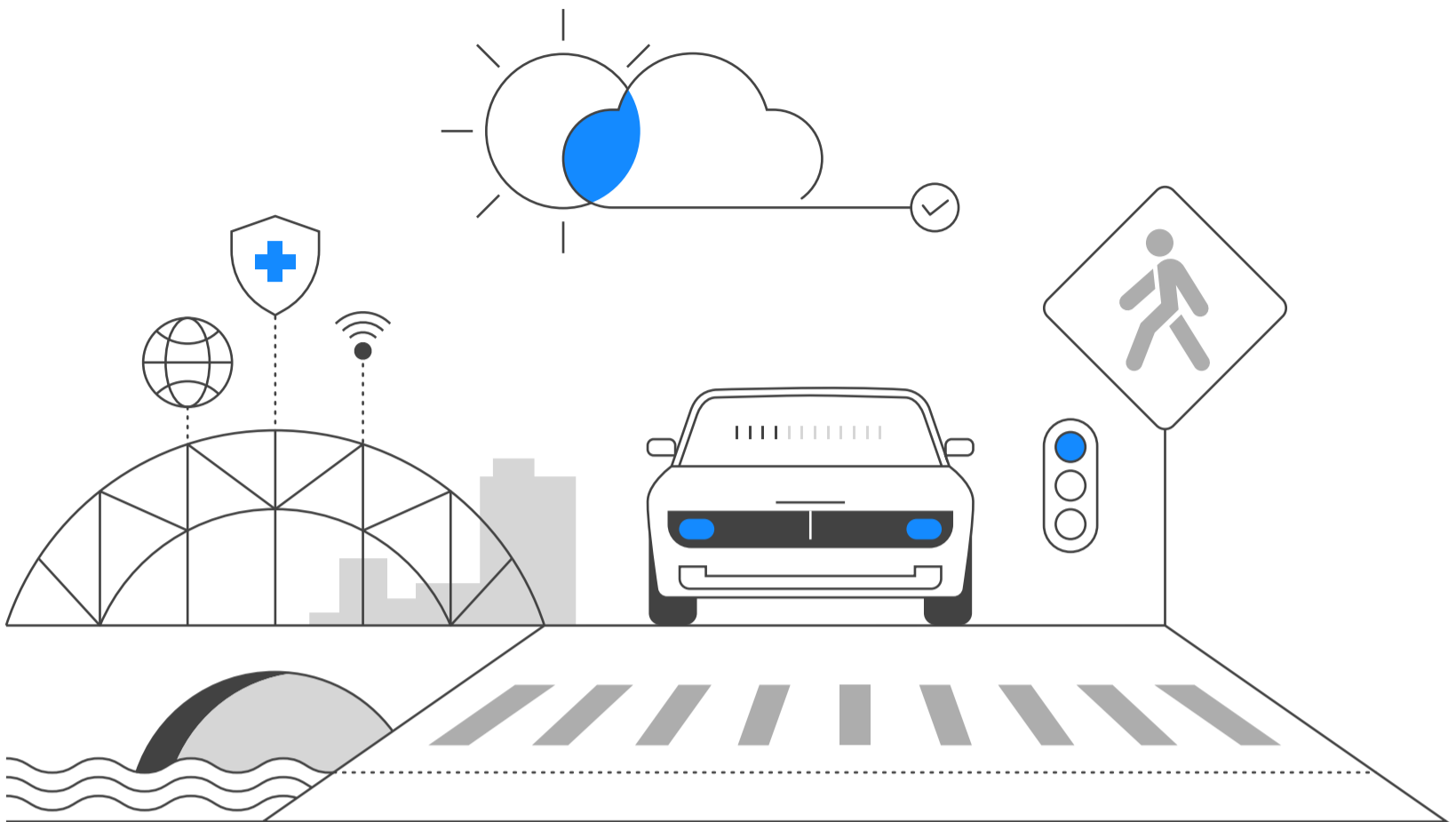
## The Power of Conflow

### Flagship Product of a Global Technology Aggregator

iLamp is a groundbreaking product of the Conflow Power Group, a company with extensive global manufacturing capabilities, producing up to 8,000 units per month. With years of experience in product development and electronics, Conflow Power Group focuses on IoT and smart city solutions. They own several key technologies that make iLamp possible, ranging from advanced electronic modules and power management systems to battery monitoring, automatic lighting, and LED technologies. Their expertise also extends to cylindrical glass solar panel manufacturing.

Conflow Power Group collaborates with several external developers to adapt their technologies for iLamp, providing a comprehensive development kit to support these innovations. This collaboration has led to a robust, established ecosystem surrounding every key aspect of streetlighting. Additionally, iLamp integrates a variety of smart city applications, making it the most comprehensive streetlighting solution available.

The company is committed to future innovation, with several new products in development, continually enhancing the capabilities and applications of iLamp. This dedication ensures that iLamp remains at the forefront of smart city technology, offering unmatched performance and versatility in urban lighting solutions.



## Add-ons and Modules

### A Modular Approach to Technological Integration

iLamp's modular design is its cornerstone, allowing developers to create custom hardware and software modules that seamlessly integrate with iLamp's power and data management systems, ensuring a quick, plug-and-play setup.

Modules are backwards compatible, and so can be built in at manufacture or added at any time in the future, future proofing each iLamp and allowing upsells at the time of sale and any future point.

As new hardware modules are continuously developed by iLamp and its partners each iLamp becomes a perpetual revenue generator, creating a never ending cycle of recurring revenue and sales fees.

Each of these add-on modules consumes power, data and rack space, for which the module is billed via Power as a Service. A module development kit is openly available to all third party developers.

From environmental sensors to advanced communication tools, the iLamp platform is not just about illumination; it's about revolutionising urban infrastructure and providing a robust, future proofed product that becomes the backbone of the smart cities of the future.

---

## Add-ons and Modules



### Road Safety

iLamp positively impacts road safety by providing optimal lighting conditions on roads and highways. Its adaptive lighting capabilities can adjust brightness according to traffic conditions, enhancing safety during peak hours and adverse weather conditions. Additionally, camera and communications modules support apps to monitor traffic, detect potential hazards, and improve response times to accidents, further improving road safety.



### Pedestrian Safety

iLamp improves pedestrian safety by providing enhanced streetlighting in areas such as sidewalks, crosswalks, and public transportation stops. Modular cameras can be used to monitor pedestrian movement and help identify crimes and hazards, ensuring a safer environment for walking and other outdoor activities.



### Weather Monitoring Module

Weather sensors can detect changing- weather conditions, such as fog, rain, or snow, and adjust the intensity and distribution of light accordingly. This adaptability enhances visibility for drivers and pedestrians in adverse weather conditions, further improving public safety.



### Environmental Sensors

Air quality monitoring can help track air quality, pollen and pollution levels in real time for proactive data driven responses that limit exposure and maintain a healthy environment. By monitoring and addressing air quality concerns, iLamp contributes to improved broader public health and well being.



### Communications

Communication modules can both expand telecoms coverage and facilitate the transmission of critical information to the relevant authorities and emergency services in case of accidents or security incidents. This real time communication improves response times and overall public safety.



---

 **Air Quality Module**

Air quality monitoring can help track pollution levels in real time, allowing authorities to implement appropriate measures to limit exposure and maintain a healthy environment. By monitoring and addressing air quality concerns, iLamp contributes to improved broader public health and well-being.

 **Communications**

Communication modules can both expand telecoms coverage and facilitate the transmission of critical information to the relevant authorities and emergency services in case of accidents or security incidents. This real-time communication can help improve response times and overall public safety.

 **Light Pollution Reduction**

The adaptive lighting capabilities of iLamp can minimize light pollution by adjusting brightness levels according to the time of day and surrounding conditions. This can contribute to a better night-time environment, reducing the impact of artificial light on wildlife and human health.

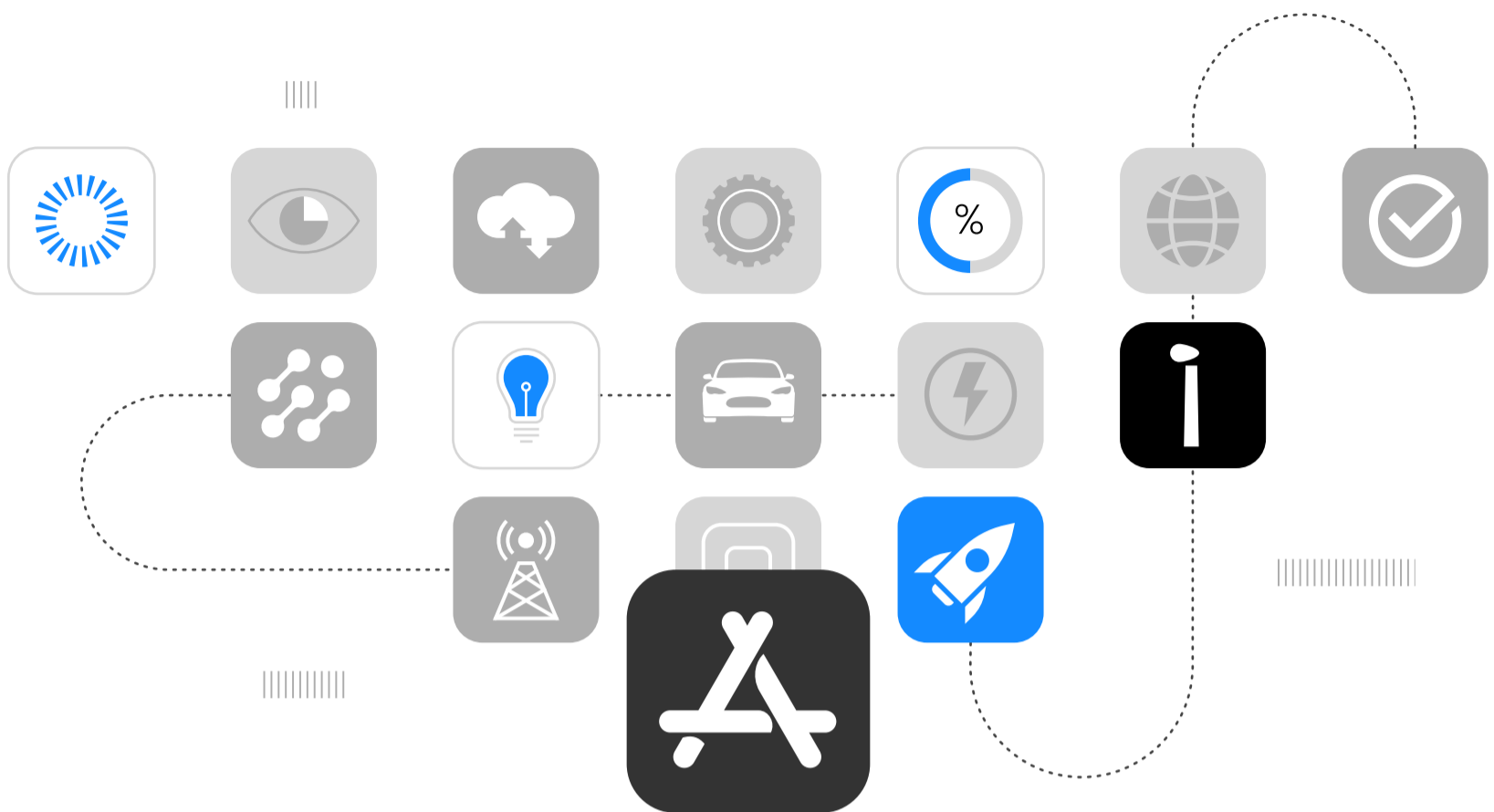
 **Integration with Existing Infrastructure**

iLamp technology can integrate with existing sensors and infrastructure, allowing for enhanced data collection and analysis. By connecting iLamp with sensors a modules facilitating parking, traffic management, telecommunications structural, UV and noise monitoring, fire, leak and flood detection, grid management and many more.

 **Interconnectivity**

Hardware modules can open their sensors to software apps, facilitating real-time data transmission between sensors and software, creating a comprehensive and interconnected network that monitors and manages various aspects of urban living more effectively.





## iLamp App Store for Urban Innovation

iLamp stands at the forefront of urban technological evolution, akin to how the Google Play and Apple App Store redefined the landscape of software applications. iLamp transcends its primary function, unfolding as a dynamic framework for both hardware and software ingenuity.

### Innovative Solutions

In the iLamp ecosystem combinations of hardware and software create transformative solutions for urban challenges. For instance, integrated microphones in iLamps enable a software application for gunshot detection and triangulation, providing precise location data for rapid law enforcement response, enhancing public safety. Similarly, iLamps equipped with smoke and heat sensors can detect early signs of forest fires, allowing for prompt alerts to residents and emergency crews, significantly mitigating fire damage and safeguarding communities. Motion sensors and cameras on iLamps optimise traffic flow through AI-driven analysis of traffic patterns, reducing congestion and accident risks, and contributing to a more environmentally friendly urban environment. These examples exemplify iLamp's potential in revolutionising urban living through smart, integrated technology solutions.

---

## Empowering Local Innovation, Impacting Globally

While iLamp's immediate influence is local, enhancing public spaces with smart lighting, its potential for global technology dissemination is significant. This model encourages local developers to contribute to a growing repository of modular solutions, potentially setting new standards in urban technology and smart city development.

## Creating a Sustainable Ecosystem

The beauty of the iLamp model lies in its economic and collaborative structure. Territorial holders stand to gain considerably, capturing over 20% of the revenue from apps developed in their region, incentivising territorial holders to promote innovation within their locale but also allowing them to include these novel solutions in their sales pitches, thereby broadening their offer to clients. This creates a symbiotic ecosystem where territorial holders, developers, and end-users benefit mutually.



### Intelligent Lighting

iLamp's intelligent lighting app ensures the correct lighting level for the area it's positioned in, adapting to visibility and weather.



### Power As A Service

PaaS redefines how energy is generated, distributed, and monetized on each iLamp.



### Communications Billing

Communications billing enables each module to pay only for the data it uses, as well as for open WiFi network billing.



### Batteryware Monitoring And Optimisation

BatteryWare conducts comprehensive monitoring, and real-time analysis to ensure optimal battery conditions.



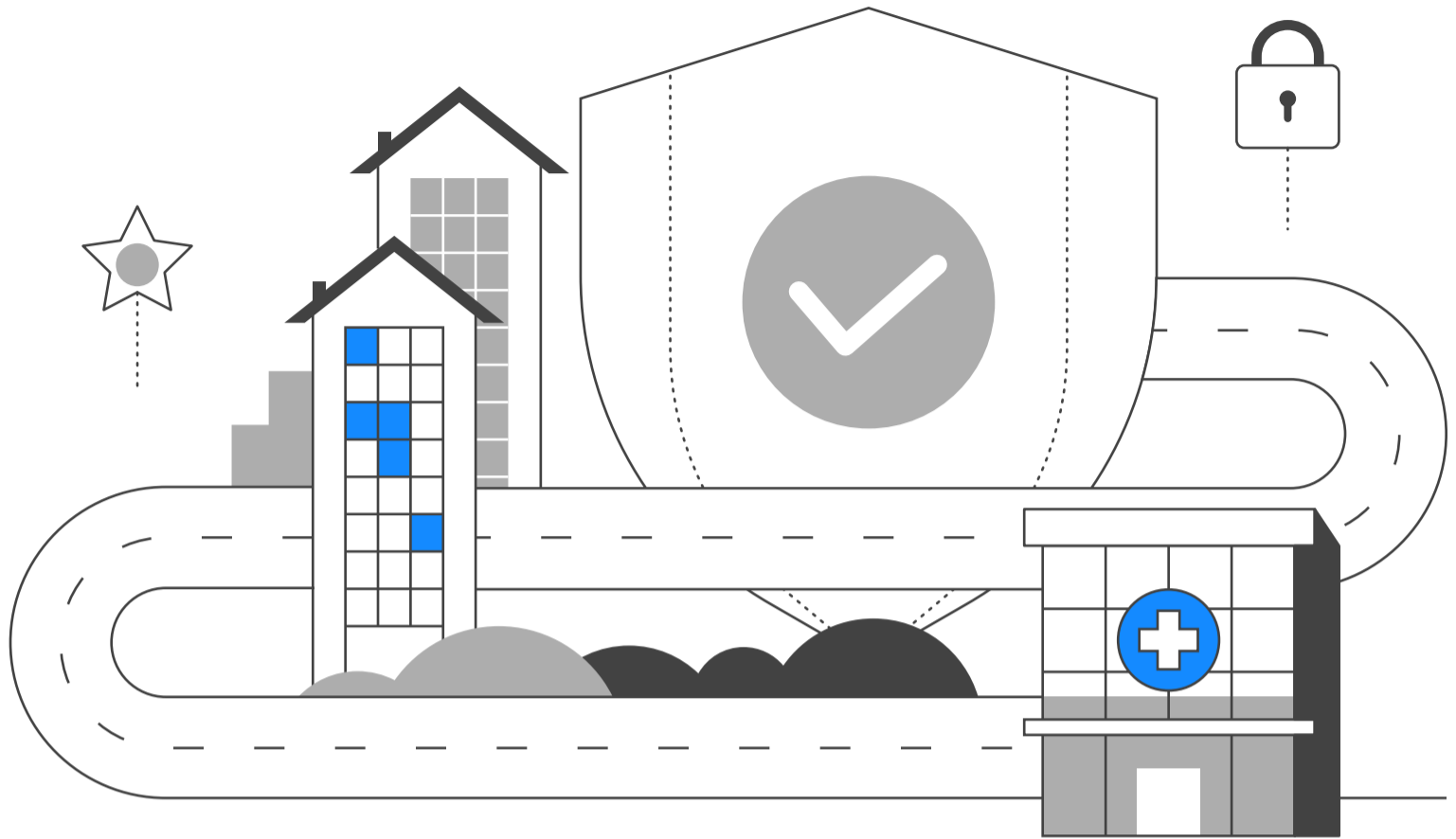
### Video Surveillance

Video surveillance enables remote real time monitoring, motion detection, high definition video, smart alerts and integrations.



### Weather Monitoring

Weather monitoring uses environmental sensors to act as a local weather station, relaying real time data to stakeholders.



## Enhanced Street Lighting Houston

Houston's crime rates are higher than the national average, making it crucial to implement effective crime prevention strategies.

Studies have shown that improved/enhanced street lighting reduces crime by 20-40%, making enhanced lighting the single most effective way to lower crime while also increasing pedestrian and road safety.

Specific studies indicate:

**UK Home Office:** 20% reduction in crime, including vehicle-related crimes.

**U.S. Study:** Published in *Criminology & Public Policy* showed 45% reduction in nighttime index crime and a 39% reduction in daytime index crimes following enhanced lighting installation.

Enhanced street lighting could lead to a significant reduction in crime rates, potentially by 20-30%. This includes reductions in various types of crimes such as vehicle theft, property crimes, and violent crimes.

A 1% reduction in overall crime can lead to a 0.5% to 1% increase in property values. A 10% reduction in crime can result in a substantial increase in property values, potentially up to 8%.

---

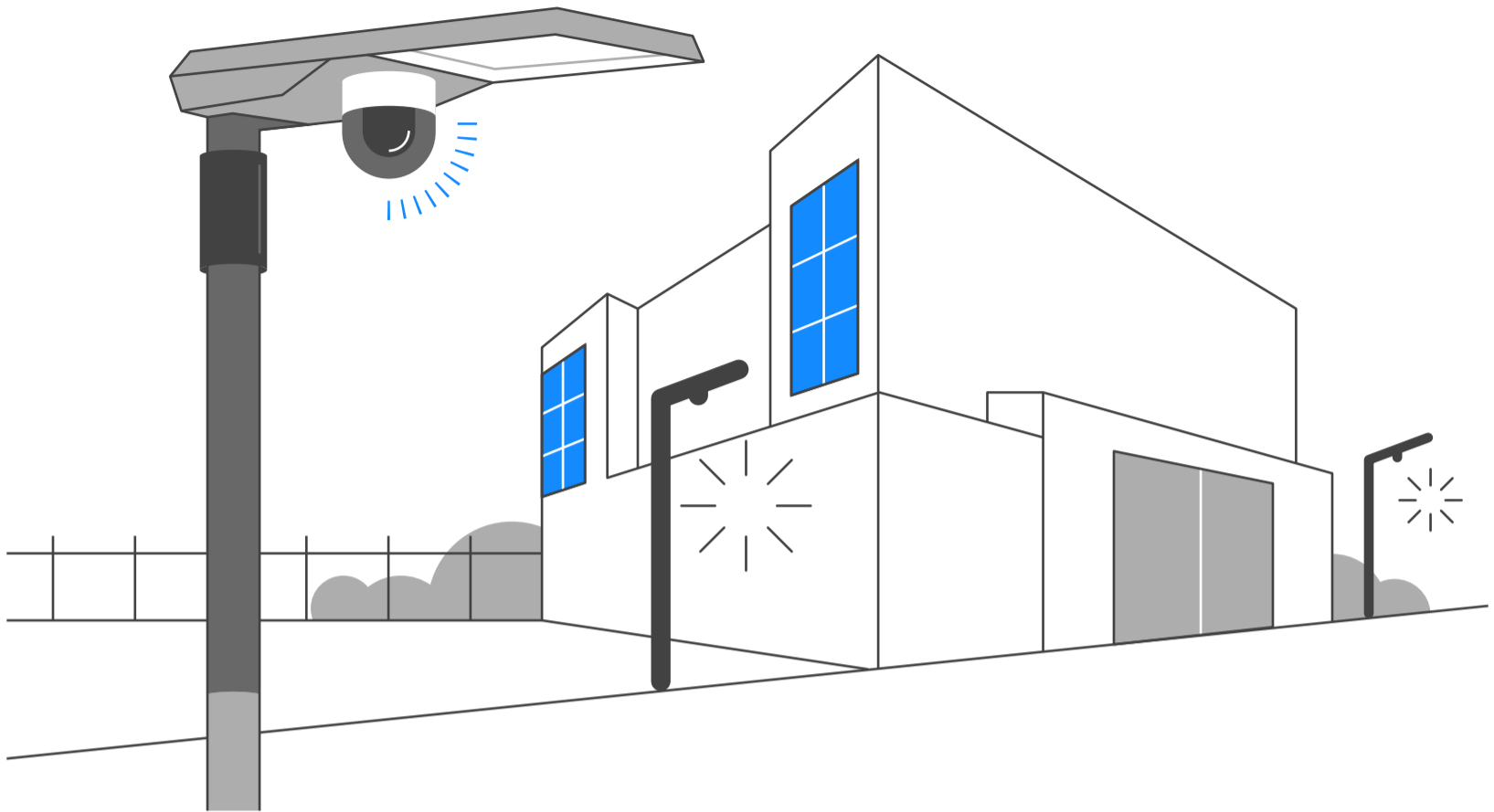
For Houston, with an average house price of \$340,000, enhanced lighting could increase property values significantly in previously unlit or poorly lit areas.

Enhanced street lighting can further lead to economic stability and growth by attracting businesses and improving the quality of life. The increase in property values and improved safety drive more investments in the local infrastructure and services.

Better-lit streets can improve the perception of safety, leading to increased outdoor activities and community engagement. Improved lighting can also enhance the effectiveness of other crime prevention measures, such as CCTV surveillance.

To support the implementation of enhanced street lighting, a comprehensive database containing data on crime rates and property values has been compiled. This helps in identifying high-crime areas that would benefit most from enhanced lighting, evaluating the cost-effectiveness and impact of enhanced lighting projects and monitoring the long-term effects on crime rates and property values.

Enhanced street lighting presents a promising strategy for Houston to improve public safety, reduce crime, and boost property values. Given the city's rapid growth and active real estate market, investing in such infrastructure yields substantial benefits, making neighborhoods safer and more attractive to residents and businesses.



## The iLamp Effect

Imagine a neighbourhood with above average crime, where after dark the streets feel unsafe and are inadequately lit.

People avoid the area, the perceived danger deters people from frequenting local businesses, which in turn close earlier or shutter permanently. The neighborhood loses its vibrancy and appeal, leading to declining property values and further disinvestment. People leave for brighter pastures.

Now imagine iLamp's are installed, their enhanced lighting and cameras begin to deter crime, first due to the lighting, monitoring, and then due to the larger presence of people who now feel safe walking the streets.

This reduction in crime leads to a domino effect: as people feel safer, they are more likely to walk around, visit local businesses, and participate in community activities. This increased presence of people further deters criminal behavior, creating a safer and more welcoming environment.

Better street lighting also contributes to road safety. Well lit streets significantly reduce the likelihood of traffic accidents and pedestrian casualties. Emergency services, including police, firefighters, and medical personnel,

---

benefit from improved visibility, allowing them to navigate the area more efficiently and locate incidents quickly. This enhanced response capability saves lives and mitigate the severity of emergencies.

As safety improves, the community begins to experience a revival. People start to move into the area, attracted by the now safer and more appealing environment. This influx of residents drives up property values and stimulates the local economy. Businesses extend their operating hours, taking advantage of the increased foot traffic and nighttime activity. Public transportation becomes more accessible and reliable, allowing residents to shop, socialize, and commute safely after dark. This increased mobility to a higher quality of life and a more vibrant community atmosphere.

iLamp is not only functional, but aesthetically pleasing. They can be positioned to highlight architectural features and are designed to minimize light pollution, creating a pleasant nighttime atmosphere.

iLamp modules make each lamp future proof, and can tailored to the community's needs. For instance, environmental sensors can help allergy sufferers by providing real-time air quality data. Other modules can offer early warnings for forest fires, gas leaks, and weather events, enhancing overall safety and preparedness.

This story is backed by the hard evidence of communities that have undergone this transformation which take place Housto-widet.

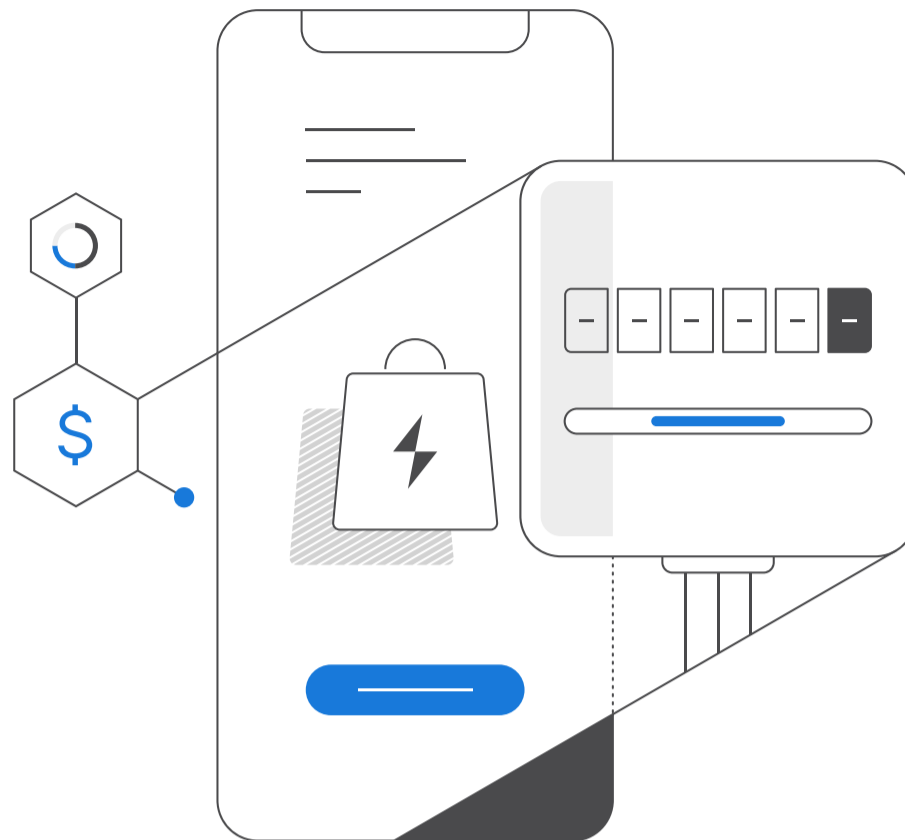
The Impact of Street Lighting on Crime, Fear, and Pedestrian Street Use - by Kate Painter - Institute of Criminology, University of Cambridge, UK

[https://popcenter.asu.edu/sites/default/files/137-painter-the\\_impact\\_of\\_street\\_lighting\\_on\\_crime\\_fear\\_an.pdf](https://popcenter.asu.edu/sites/default/files/137-painter-the_impact_of_street_lighting_on_crime_fear_an.pdf)

College of Policing - Improved Street Lighting <https://www.college.police.uk/research/crime-reduction-toolkit/street-lighting>

Can deterrence persist? Long-term evidence from a randomized experiment in street lighting - Criminology and Public Policy

To find out more about a specific neighbourhood, visit [iLampTexas.com](http://iLampTexas.com).



## Power as a Service

Power as a Service (PaaS) is a payment processor connected to an energy management and distribution solution which was designed from the ground up to manage clean kilowatt hours (kWh) of locally produced and consumed power. PaaS enables the generation, metering, and monetization of this localised power on a decentralized basis between varied stakeholders.

Each iLamp unit is equipped with solar panels that harness renewable energy, storing it in batteries for efficient distribution. This setup not only powers the streetlighting but also supports a variety of smart sensors and modules. These modules may include cameras, environmental sensors, weather stations, and telecommunications devices which all use power, and all may have separate billing accounts with PaaS. By metering energy generated and consumed by each device PaaS enables a new paradigm where power can be locally generated for local consumption, eliminating transmission costs and emissions to near zero.

Under the PaaS model, the iLamp licensee can create PaaS contracts that delineates roles for both power suppliers and power users. Much like traditional utility models, these contracts enable accurate billing based on actual energy consumption, this is a significant step towards redefining how energy is generated, distributed, and monetized in the modern era and a crucial extra revenue stream which can be explored by iLamp licensees.



---

# The Houston Market

Houston's rapid growth and underlit neighborhoods present a unique opportunity for iLamp to make a significant impact. By addressing the lighting shortfall relative to the city's expanding population and housing market, iLamp can enhance safety, increase property values, and improve public health. With its self-powered, modular design, iLamp provides a future-proof, smart city-capable solution that can be adapted to meet the specific needs of different areas. As Houston continues to grow, the need for innovative solutions like iLamp becomes ever more critical, ensuring that the city remains a safe, healthy, and desirable place to live.

Any public or private entity that needs future proof, self powered, energy saving, revenue generating enhanced street lighting with limitless modular potential for their streets and highways, parking lots and backyards. These entities would include public municipalities, individual home owners, home owner associations, business owners with parking lots, etc.

**Underlit Relative to Homes and Population:** Houston, the fourth most populous city in the United States, is facing a significant disparity between its streetlighting infrastructure and its rapid population growth. With just 176,000 streetlights for a sprawling urban area, Houston falls below the national average in terms of adequate streetlighting coverage. This shortage leaves many neighborhoods underlit, creating an urgent need for enhanced streetlighting solutions to improve safety and quality of life for residents.

**Rapidly Growing Population and Housing:** Houston is not just a large city; it's a rapidly expanding one. It has earned the title of the fastest-growing city in the U.S. for new home construction in 2023, with a three-county region boasting 2.4 million housing units. Houston's real estate market is incredibly active, having built 300% more homes than California's major housing markets, despite having a smaller population. This boom reflects Houston's dynamic growth, but it also underscores the pressing need for infrastructure improvements, including streetlighting, to keep pace with the city's expansion.

**Need for Safer, Healthier Neighborhoods:** The rapid growth in population and housing brings with it challenges that need to be addressed to ensure sustainable development. One critical area is neighborhood safety. Studies have shown that improved streetlighting can reduce crime by 20-40%. In a city like Houston, where many areas remain underlit, crime is above the national average and road fatalities for drivers and pedestrians exceed national averages, enhancing streetlighting can lead to substantial reductions in road fatalities and crime, including vehicle-related crimes and other



## iLamp Sales, Installs, and Maintenance

iLamp sales represent the largest revenue producing activity for licensees, providing them with a lucrative opportunity in the rapidly growing smart lighting market. To support sales efforts, iLamp offers comprehensive resources including sales proposals, branding kits, detailed product information, and benefit training resources. Additionally, licensees receive guides on available grants and best practices for approaching towns, counties, and municipalities, ensuring they are well-prepared to begin sales activities immediately.

iLamp products can be sold to a diverse range of public and private entities. Potential clients include public streets and highways, educational campuses, parks and recreational areas, parking lots, hotels and resorts, industrial estates and factories, hospitals and healthcare facilities, residential developments, train stations and railway networks, airports and ports, shopping complexes and malls, small businesses, stadiums and arenas, pathways and cycleways, homeowners associations and many more.

This broad market base provides licensees with extensive opportunities to secure contracts and drive significant sales revenue.

---

iLamp has been engineered for ease of installation, requiring minimal manpower and equipment. This user-friendly design allows sales agents to offer efficient and cost-effective installation services. Installation guides and cost calculators are readily available from iLamp Texas, ensuring that licensees can accurately estimate installation costs and streamline the installation process.

Sales agents have the flexibility to either control the installation process themselves or sublicense these services. By sublicensing, they can generate additional revenue through the sale of installation rights or by charging royalties on services rendered. This approach enables licensees to maximize their revenue potential and capitalize on every aspect of the sales and installation process.

Maintenance of iLamp systems is another key revenue stream for licensees. Similar to installation, maintenance services can be controlled directly by the licensee or sublicensed. Charging royalties on maintenance contracts provides a continuous revenue source, akin to receiving a commission on each contract. This ensures that licensees benefit not only from the initial sale but also from ongoing service agreements.

The combined revenue from sales, installation, and maintenance of iLamps is substantial. With a wholesale cost of \$5000 and a sale price of \$9000 per unit, a small installation project of 35 units can generate over \$300,000 in sales revenue alone. This significant profit margin underscores the financial viability and attractiveness of iLamp's business model for licensees.

iLamp's direct sales, installation, and maintenance services offer a robust business opportunity for licensees. By leveraging the comprehensive resources and support provided by iLamp, licensees can effectively penetrate the market, secure diverse contracts, and achieve substantial revenue growth.

---

## Sublicensing Opportunity

The sublicensing opportunity for iLamp in Houston is both multifaceted and enormous, offering potential licensees a vast array of revenue streams and business opportunities. This innovative model allows for the exploitation of various rights categories, each of which can be sublicensed individually or collectively, providing immense flexibility to licensees.

The rights that can be exploited by the licensee include sales, manufacture, maintenance, distribution, module store, app store, and power as a service. Each of these rights can be sublicensed down to the zip code or neighborhood level. This granular approach allows the Houston sublicensee to tailor their business strategy precisely to their strengths and preferences.

The Houston sublicensee has the flexibility to manage select zip codes and neighborhoods themselves while sublicensing chosen rights categories to third parties operating in those areas. For instance, they could choose to manage all sales operations while sublicensing installation and maintenance to local experts. Alternatively, they might opt to sublicense all rights or manage everything internally. This level of flexibility enables them to balance upfront capital gains with the potential for long-term revenue growth.

Sublicensing provides the advantage of recruiting a team of local experts who bring intrinsic knowledge of Houston's diverse and expansive landscape. By capitalizing on this local expertise, iLamp Houston can engage with professionals such as manufacturers, sales people, and regional specialists who have a deep understanding of their specific areas within Houston.

The sublicensing model allows iLamp Houston to create a robust network of local partners, each bringing their unique skills and insights to the table. This collaboration helps in addressing the specific needs of different neighborhoods, enhancing the effectiveness and acceptance of iLamp's solutions.

The sublicensing opportunity for iLamp Houston presents a multifaceted and lucrative venture for potential licensees. By offering flexible management options and the ability to leverage local expertise, iLamp Houston can build a dynamic and responsive business model. This model not only maximizes revenue potential through diverse revenue streams but drives both economic growth and enhanced public safety across the city.

---

# Houston Opportunity Size

The city of Houston has a current population of approximately 2,302,878. While it is difficult to determine the ideal number of streetlights, by all estimations, Houston is severely underlit.

According to the conservative Northeast Energy Efficiency Partnerships (NEEP) formula, which aims to estimate the number of city owned streetlights in an average area in the northeast of the US, there is one public streetlight for approximately every 11.49 people. In contrast, cities like London have one public streetlight for every three people.

Houston, being a very large city with extensive roadway lighting requirements, is underlit by every estimation. Using the NEEP formula, Houston would have about 200,350 public streetlights. However, the actual number of existing public streetlights is significantly lower, at roughly 176,000, resulting in a shortfall of 24,350. To match London's lighting ratio, Houston would need 766,899 streetlights, a shortfall of 566,549. Regardless of the metric used, the conclusion is still that Houston is severely underlit.

This lack of adequate lighting, combined with an above average outdoor crime index across all categories citywide, indicates an acute need and an increased opportunity to not only replace the existing public infrastructure with enhanced, energy efficient streetlights, but also to light previously unlit areas.

In addition to the public demand, the private sector also offers a sizable market. Houston is the nation's leader in building permit activity for housing in 2023, representing a massive market for iLamp. There is a further significant requirement for private streetlights, such as those in car parks, campuses, arenas, travel hubs, industrial areas, and private developments.

Bringing iLamp to the Greater Houston area is a compelling opportunity to participate in a transformative, revenue generating, and sustainable urban development project. With significant market potential, robust financial projections, and strong legislative support, iLamp Texas is poised to transform Houston's streets and neighborhoods.

---

## Opportunity Breakdown

For \$17 million, you can secure the exclusive distribution license for iLamp in the Greater Houston area. This license grants you control over all iLamp sales and service, including the ability to sub-license rights and receive royalties on activity.

**Revenue Streams:** Direct sales, Module Sales, App Store Sales, Module and App subscriptions, Power as a Service, Installation, Maintenance, Upsells, Retrofits.

**Five-Year Projection:** Installing 50,000 iLamps would generate over \$450-million in gross revenue.

Since 2019, the Houston metro has seen a total of 343,779 permitted housing units. Adding an iLamp to each home offers homeowners the ability to choose services based on their requirements and preferences. For instance, one resident might opt for a camera for 24/7 surveillance of their property, while another might choose not to have a camera.

iLamp also provides a unique revenue stream for developers. By selling "rack space" or real estate within the lamp to integrate third-party modules and services, developers can generate ongoing revenue. This includes communication connectivity fees and metered power as a service. On average, each iLamp produces \$150 of revenue per year.

If half of the permitted housing units get built, that would result in 171,889 houses, generating \$25,783,350 in revenue per year. This approach not only offers a host of auxiliary benefits but also capitalizes on a significant opportunity for sustainable urban development.

---

# Price Overview

Reservation fee  
**\$500,000**

You receive post-payment:

- 1 year option to buy territory
- Materials and support to raise money
- Demonstration pole
- Localised website
- Media pack, images, videos, etc
- ILOCX Listing

Royalty percentage paid **10%**

---

License Fee **\$17,000,000**

---

Amount payable to exercise option and receive territorial license **\$16,500,000**

---

You receive after payment:

- Territorial license
- Demo pole shipped & installed
- Sub-licensing rights\*

## Price Breakdown

**Cost:** \$17 million for exclusive distribution rights in Greater Houston (population: 2.3 million).

**iLamp Pricing:** Wholesale - \$5,000 | Retail - \$9,000 | Profit per unit - \$4,000.

**Break-Even Point:** Sell and install 4,250 iLamps (1.24% of housing permits since 2019).

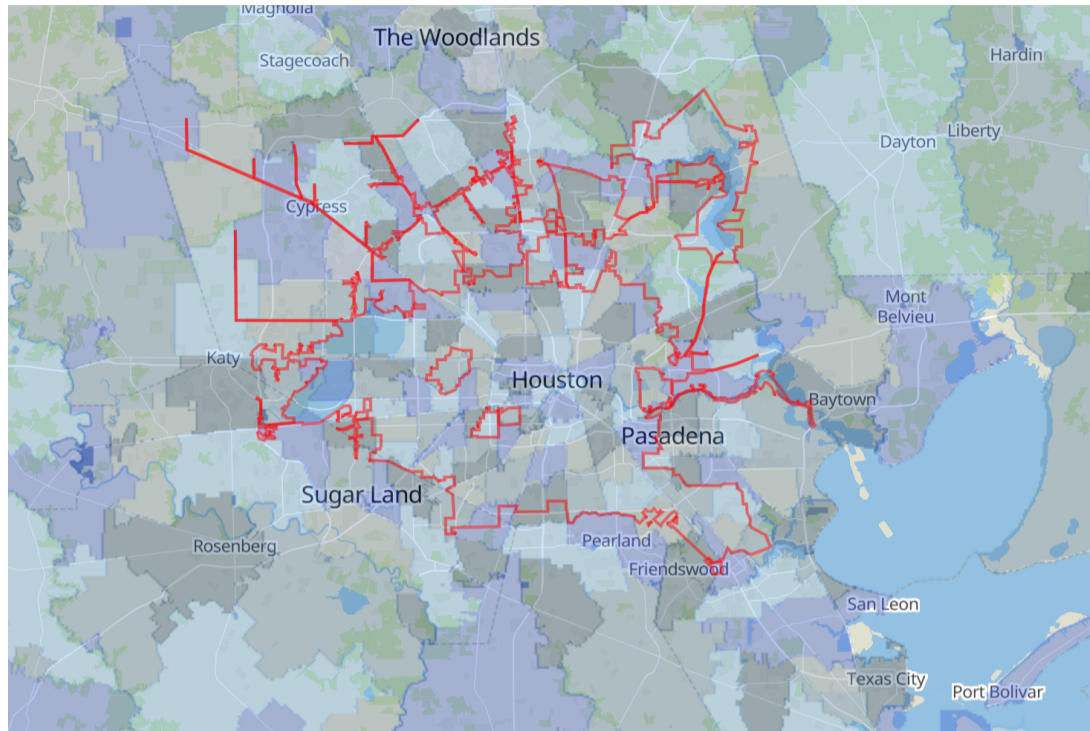
**Financial Incentives:** Potential for grants from the Inflation Reduction Act and other government programs.

Gross Revenue: Installing 50,000 iLamps could generate over \$450 million in five years.

Annual Revenue: If half of the permitted housing units since 2019 are built (171,889 houses), revenue could reach \$25.8 million annually from additional services.



# Houston Texas Area Definition



The Houston, Texas area comprises 146 ZIP Codes.

Zip	City	State	County	Area Codes	Population	Streetlights	Value
77036	Houston	TX	Harris County	281, 346, 713, 832	48860	4250.82	\$38,257,380.00
77072	Houston	TX	Harris County	281, 346, 713, 832	47570	4138.59	\$37,247,310.00
77077	Houston	TX	Harris County	281, 346, 713, 832	51650	4493.55	\$40,441,950.00
77081	Houston	TX	Harris County	281, 346, 713, 832	32800	2853.6	\$25,682,400.00
77080	Houston	TX	Harris County	281, 346, 713, 832	35590	3096.33	\$27,866,970.00
77099	Houston	TX	Harris County	281, 346, 713, 832	39660	3450.42	\$31,053,780.00
77057	Houston	TX	Harris County	281, 346, 713, 832	31260	2719.62	\$24,476,580.00
77009	Houston	TX	Harris County	281, 346, 713, 832	30750	2675.25	\$24,077,250.00
77055	Houston	TX	Harris County	281, 346, 713, 832	35540	3091.98	\$27,827,820.00
77035	Houston	TX	Harris County	281, 346, 713, 832	28530	2482.11	\$22,338,990.00
77042	Houston	TX	Harris County	281, 346, 713, 832	33170	2885.79	\$25,972,110.00
77087	Houston	TX	Harris County	281, 346, 713, 832	29860	2597.82	\$23,380,380.00
77004	Houston	TX	Harris County	281, 346, 713, 832	19430	1690.41	\$15,213,690.00
77034	Houston	TX	Harris County	281, 346, 713, 832	32350	2814.45	\$25,330,050.00
77063	Houston	TX	Harris County	281, 346, 713, 832	29110	2532.57	\$22,793,130.00
77076	Houston	TX	Harris County	281, 346, 713, 832	26710	2323.77	\$20,913,930.00
77082	Houston	TX	Harris County	281, 346, 713, 832	45830	3987.21	\$35,884,890.00
77092	Houston	TX	Harris County	281, 346, 713, 832	26910	2341.17	\$21,070,530.00
77096	Houston	TX	Harris County	281, 346, 713, 832	28740	2500.38	\$22,503,420.00

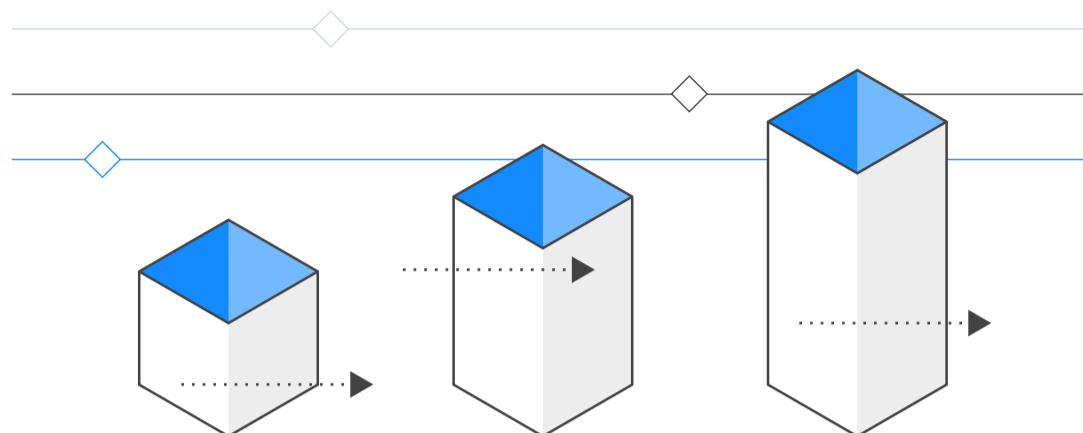
Zip	City	State	County	Area Codes	Population	Streetlights	Value
77339	Kingwood	TX	Harris County	281, 346, 713, 832	38360	3337.32	\$30,035,880.00
77007	Houston	TX	Harris County	281, 346, 713, 832	36060	3137.22	\$28,234,980.00
77008	Houston	TX	Harris County	281, 346, 713, 832	32560	2832.72	\$25,494,480.00
77017	Houston	TX	Harris County	281, 346, 713, 832	26810	2332.47	\$20,992,230.00
77045	Houston	TX	Harris County	281, 346, 713, 832	29800	2592.6	\$23,333,400.00
77079	Houston	TX	Harris County	281, 346, 713, 832	33240	2891.88	\$26,026,920.00
77088	Houston	TX	Harris County	281, 346, 713, 832	47110	4098.57	\$36,887,130.00
77022	Houston	TX	Harris County	281, 346, 713, 832	22820	1985.34	\$17,868,060.00
77023	Houston	TX	Harris County	281, 346, 713, 832	20870	1815.69	\$16,341,210.00
77060	Houston	TX	Harris County	281, 346, 713, 832	31560	2745.72	\$24,711,480.00
77016	Houston	TX	Harris County	281, 346, 713, 832	25720	2237.64	\$20,138,760.00
77033	Houston	TX	Harris County	281, 346, 713, 832	24620	2141.94	\$19,277,460.00
77053	Houston	TX	Fort Bend County	281, 346, 713, 832	27860	2423.82	\$21,814,380.00
77018	Houston	TX	Fort Bend County	281, 346, 713, 832	25360	2206.32	\$19,856,880.00
77020	Houston	TX	Fort Bend County	281, 346, 713, 832	20590	1791.33	\$16,121,970.00
77021	Houston	TX	Fort Bend County	281, 346, 713, 832	20290	1765.23	\$15,887,070.00
77025	Houston	TX	Fort Bend County	281, 346, 713, 832	22840	1987.08	\$17,883,720.00
77061	Houston	TX	Fort Bend County	281, 346, 713, 832	17930	1559.91	\$14,039,190.00
77062	Houston	TX	Fort Bend County	281, 346, 713, 832	22980	1999.26	\$17,993,340.00
77093	Houston	TX	Fort Bend County	281, 346, 713, 832	41060	3572.22	\$32,149,980.00
77345	Houston	TX	Fort Bend County	281, 346, 713, 832	26610	2315.07	\$20,835,630.00
77026	Houston	TX	Fort Bend County	281, 346, 713, 832	18660	1623.42	\$14,610,780.00
77043	Houston	TX	Fort Bend County	281, 346, 713, 832	27610	2402.07	\$21,618,630.00
77054	Houston	TX	Fort Bend County	281, 346, 713, 832	14760	1284.12	\$11,557,080.00
77089	Houston	TX	Fort Bend County	281, 346, 713, 832	51260	4459.62	\$40,136,580.00
77091	Houston	TX	Fort Bend County	281, 346, 713, 832	21620	1880.94	\$16,928,460.00
77012	Houston	TX	Fort Bend County	281, 346, 713, 832	14380	1251.06	\$11,259,540.00
77024	Houston	TX	Fort Bend County	281, 346, 713, 832	34500	3001.5	\$27,013,500.00
77071	Houston	TX	Fort Bend County	281, 346, 713, 832	23060	2006.22	\$18,055,980.00
77006	Houston	TX	Fort Bend County	281, 346, 713, 832	17690	1539.03	\$13,851,270.00
77011	Houston	TX	Fort Bend County	281, 346, 713, 832	13580	1181.46	\$10,633,140.00
77019	Houston	TX	Fort Bend County	281, 346, 713, 832	19030	1655.61	\$14,900,490.00
77040	Houston	TX	Fort Bend County	281, 346, 713, 832	42520	3699.24	\$33,293,160.00
77056	Houston	TX	Fort Bend County	281, 346, 713, 832	19630	1707.81	\$15,370,290.00

Zip	City	State	County	Area Codes	Population	Streetlights	Value
77002	Houston	TX	Harris County	281, 346, 713, 832	8480	737.76	\$6,639,840.00
77013	Houston	TX	Harris County	281, 346, 713, 832	12700	1104.9	\$9,944,100.00
77028	Houston	TX	Harris County	281, 346, 713, 832	16010	1392.87	\$12,535,830.00
77085	Houston	TX	Harris County	281, 346, 713, 832	16380	1425.06	\$12,825,540.00
77489	Missouri City	TX	Fort Bend County	281, 346, 713, 832	34150	2971.05	\$26,739,450.00
77015	Houston	TX	Harris County	281, 346, 713, 832	48020	4177.74	\$37,599,660.00
77027	Houston	TX	Harris County	281, 346, 713, 832	14820	1289.34	\$11,604,060.00
77031	Houston	TX	Harris County	281, 346, 713, 832	12550	1091.85	\$9,826,650.00
77047	Houston	TX	Harris County	281, 346, 713, 832	27820	2420.34	\$21,783,060.00
77048	Houston	TX	Harris County	281, 346, 713, 832	18120	1576.44	\$14,187,960.00
77051	Houston	TX	Harris County	281, 346, 713, 832	14390	1251.93	\$11,267,370.00
77059	Houston	TX	Harris County	281, 346, 713, 832	17960	1562.52	\$14,062,680.00
77078	Houston	TX	Harris County	281, 346, 713, 832	13020	1132.74	\$10,194,660.00
77084	Houston	TX	Harris County	281, 346, 713, 832	98990	8612.13	\$77,509,170.00
77098	Houston	TX	Harris County	281, 346, 713, 832	12670	1102.29	\$9,920,610.00
77003	Houston	TX	Harris County	281, 346, 713, 832	8500	739.5	\$6,655,500.00
77005	Houston	TX	Harris County	281, 346, 713, 832	22870	1989.69	\$17,907,210.00
77030	Houston	TX	Harris County	281, 346, 713, 832	9350	813.45	\$7,321,050.00
77598	Houston	TX	Harris County	281, 346, 713, 832	19510	1697.37	\$15,276,330.00
77041	Houston	TX	Harris County	281, 346, 713, 832	33890	2948.43	\$26,535,870.00
77044	Houston	TX	Harris County	281, 346, 713, 832	51640	4492.68	\$40,434,120.00
77058	Houston	TX	Harris County	281, 346, 713, 832	14320	1245.84	\$11,212,560.00
77067	Houston	TX	Harris County	281, 346, 713, 832	25700	2235.9	\$20,123,100.00
77029	Houston	TX	Harris County	281, 346, 713, 832	15500	1348.5	\$12,136,500.00
77037	Houston	TX	Harris County	281, 346, 713, 832	17330	1507.71	\$13,569,390.00
77070	Houston	TX	Harris County	281, 346, 713, 832	46050	4006.35	\$36,057,150.00
77396	Houston	TX	Harris County	281, 346, 713, 832	52790	4592.73	\$41,334,570.00
77049	Houston	TX	Harris County	281, 346, 713, 832	34790	3026.73	\$27,240,570.00
77090	Houston	TX	Harris County	281, 346, 713, 832	31660	2754.42	\$24,789,780.00
77336	Huffman	TX	Harris County	281, 346, 713, 832, 936	13500	1174.5	\$10,570,500.00
77450	Katy	TX	Harris County	281, 346, 713, 832, 936	66510	5786.37	\$52,077,330.00
77032	Houston	TX	Harris County	281, 346, 713, 832, 936	10960	953.52	\$8,581,680.00
77038	Houston	TX	Harris County	281, 346, 713, 832, 936	27450	2388.15	\$21,493,350.00
77046	Houston	TX	Harris County	281, 346, 713, 832, 936	1850	160.95	\$1,448,550.00

Zip	City	State	County	Area Codes	Population	Streetlights	Value
77050	Houston	TX	Harris County	281, 346, 713, 832	4100	356.7	\$3,210,300.00
77064	Houston	TX	Harris County	281, 346, 713, 832	43230	3761.01	\$33,849,090.00
77065	Houston	TX	Harris County	281, 346, 713, 832	31360	2728.32	\$24,554,880.00
77073	Houston	TX	Harris County	281, 346, 713, 832	41970	3651.39	\$32,862,510.00
77083	Houston	TX	Harris County	281, 346, 713, 832	66830	5814.21	\$52,327,890.00
77086	Houston	TX	Harris County	281, 346, 713, 832	25080	2181.96	\$19,637,640.00
77338	Humble	TX	Harris County	281, 346, 713, 832	38430	3343.41	\$30,090,690.00
77477	Stafford	TX	Ford Bend County	281, 346, 713, 832	30100	2618.7	\$23,568,300.00
77494	Katy	TX	Ford Bend County	281, 346, 713, 832	128670	11194.29	\$100,748,610.00
77504	Pasadena	TX	Harris County	281, 346, 713, 832	19910	1732.17	\$15,589,530.00
77010	Houston	TX	Harris County	281, 346, 713, 832	480	41.76	\$375,840.00
77014	Houston	TX	Harris County	281, 346, 713, 832	28930	2516.91	\$22,652,190.00
77039	Houston	TX	Harris County	281, 346, 713, 832	24060	2093.22	\$18,838,980.00
77066	Houston	TX	Harris County	281, 346, 713, 832	31790	2765.73	\$24,891,570.00
77068	Houston	TX	Harris County	281, 346, 713, 832	10990	956.13	\$8,605,170.00
77069	Houston	TX	Harris County	281, 346, 713, 832	16950	1474.65	\$13,271,850.00
77094	Houston	TX	Harris County	281, 346, 713, 832	10800	939.6	\$8,456,400.00
77095	Houston	TX	Harris County	281, 346, 713, 832	64670	5626.29	\$50,636,610.00
77097	Houston	TX	Harris County	713	0	0	\$0.00
77201	Houston	TX	Harris County	713281, 346, 713, 832	0	0	\$0.00
77346	Houston	TX	Harris County	281, 346, 713, 832	70480	6131.76	\$55,185,840.00
77357	New Caney	TX	Montgomery County	281, 346, 713, 832	29500	2566.5	\$23,098,500.00
77365	Porter	TX	Montgomery County	281, 346, 713, 832	40920	3560.04	\$32,040,360.00
77373	Spring	TX	Harris County	281, 346, 713, 832	58950	5128.65	\$46,157,850.00
77375	Tomball	TX	Harris County	281, 346, 713, 832	59900	5211.3	\$46,901,700.00
77377	Tomball	TX	Harris County	281, 346, 713, 832	39990	3479.13	\$31,312,170.00
77379	Spring	TX	Harris County	281, 346, 713, 832	79320	6900.84	\$62,107,560.00
77386	Spring	TX	Montgomery County	281, 346, 713, 832	64680	5627.16	\$50,644,440.00
77388	Spring	TX	Harris County	281, 346, 713, 832	47420	4125.54	\$37,129,860.00
77401	Bellaire	TX	Harris County	281, 346, 713, 832	17010	1479.87	\$13,318,830.00
77406	Richmond	TX	Ford Bend County	281, 346, 713, 832, 979	58390	5079.93	\$45,719,370.00
77407	Richmond	TX	Ford Bend County	281, 346, 713, 832	75470	6565.89	\$59,093,010.00
77429	Cypress	TX	Harris County	281, 346, 713, 832	88930	7736.91	\$69,632,190.00
77433	Cypress	TX	Harris County	281, 346, 713, 832, 936	106790	9290.73	\$83,616,570.00

Zip	City	State	County	Area Codes	Population	Streetlights	Value
77447	Hockley	TX	Harris County	281, 346, 713, 832, 936	21860	1901.82	\$17,116,380.00
77449	Katy	TX	Harris County	281, 346, 713, 832	124400	10822.8	\$97,405,200.00
77478	Sugar Land	TX	Ford Bend County	281, 346, 713, 832	22770	1980.99	\$17,828,910.00
77484	Waller	TX	Waller County	281, 346, 713, 832, 936, 979	12990	1130.13	\$10,171,170.00
77493	Katy	TX	Harris County	281, 346, 713, 832, 936	58050	5050.35	\$45,453,150.00
77498	Sugar Land	TX	Ford Bend County	281, 346, 713, 832	47300	4115.1	\$37,035,900.00
77503	Pasadena	TX	Harris County	281, 346, 713, 832	21430	1864.41	\$16,779,690.00
77506	Pasadena	TX	Harris County	281, 346, 713, 832	29200	2540.4	\$22,863,600.00
77520	Baytown	TX	Harris County	281, 346, 713, 832	33000	2871	\$25,839,000.00
77530	Channelview	TX	Harris County	281, 346, 713, 832	30570	2659.59	\$23,936,310.00
77532	Crosby	TX	Harris County	281, 346, 713, 832, 936	31460	2737.02	\$24,633,180.00
77536	Deer Park	TX	Harris County	281, 346, 713, 832	31070	2703.09	\$24,327,810.00
77546	Friendswood	TX	Galveston County	281, 346, 713, 832	50490	4392.63	\$39,533,670.00
77547	Galena Park	TX	Harris County	281, 346, 713, 832	8870	771.69	\$6,945,210.00
77571	La Porte	TX	Harris County	281, 346, 713, 832	34040	2961.48	\$26,653,320.00
77587	South Houston	TX	Harris County	281, 346, 713, 832	14270	1241.49	\$11,173,410.00
77204	Houston	TX	Harris County	281, 346, 713, 832	22	1.914	\$17,226.00
77209	Houston	TX	Harris County	713	0	0	\$0.00
77212	Houston	TX	Harris County	713	0	0	\$0.00
77216	Houston	TX	Harris County	713	0	0	\$0.00
77297	Houston	TX	Harris County	713	0	0	\$0.00
77298	Houston	TX	Harris County	713	0	0	\$0.00
77299	Houston	TX	Harris County	713	0	0	\$0.00

# Stages



## 1. Reservation

Reserve the territory on ILOCX using the account of the potential licensee: <https://app.ilocx.com/territory>.

- Once this phase is complete the potential licensee has 12 months to trigger the territorial license or lose the option.

## 2. Get Started

Once triggered the deposit needs to be paid, this totals **\$500,000** and covers all costs to install a pilot scheme in the location chosen.

- This will include delivery and installation of an autonomous iLamp as a demonstration to land sales and mass installations.
- This also covers:
  - The costs to list on ILOCX covering all upfront fees and first year listing fees.
  - The building and delivery of a local website.
  - All media and images, data and point of sale aids, email addresses, and a detailed report covering competition, USP's, market size, list of potential partners, HQ assistance for news and localized promotion of iLamp in the territory.

## 3. The Details

Once the option fee has been paid a local legal entity needs to be formed to hold the license. This is formed by the licensee.